

**MINI EXCAVATOR** | 16C-1 / 18Z-1 / 19C-1 / 19C-1 PC

**JCB**



**STAGE V**

OPERATING WEIGHT  
**1479 – 1868kg**

ENGINE POWER  
**11.7kW**

BUCKET TEAROUT  
**15.6kN / 18kN**

## CHOOSE TOUGH.

Hydraulic hoses are routed through the kingpost, boom and dipper to protect against site damage. Top-mounted boom ram reduces the risk of damage when loading.



## CHOOSE GOOD DESIGN

Full width, cast rear counterweight and 100% steel panels protect against knocks, with inexpensive repairs.



# CHOOSE EASY.

Pre-start checks are easier than ever with an external sight glass to check hydraulic oil levels and a quick to view analogue hour meter.



## CHOOSE CLOSE CONTROL

All controls are close to hand, with two-speed tracking operated by a dozer lever button.

# CHOOSE QUICK.

Utilise a quick turnaround with easy-to-clean sloping undercarriage, fast changeover of attachments and easy transportation with 10 tie-down points.



## CHOOSE TO SUIT

Choose a premium or rental spec, zero or conventional tailswing, and cab or canopy.



# CHOOSE VALUE.

Our new generation minis are designed with your profits in mind with a simple, classic design, low cost maintenance and easy repairs.



## CHOOSE EFFICIENT

The Perkins 403J-07 diesel engine is Stage V compliant, without needing a DPF or AdBlue.

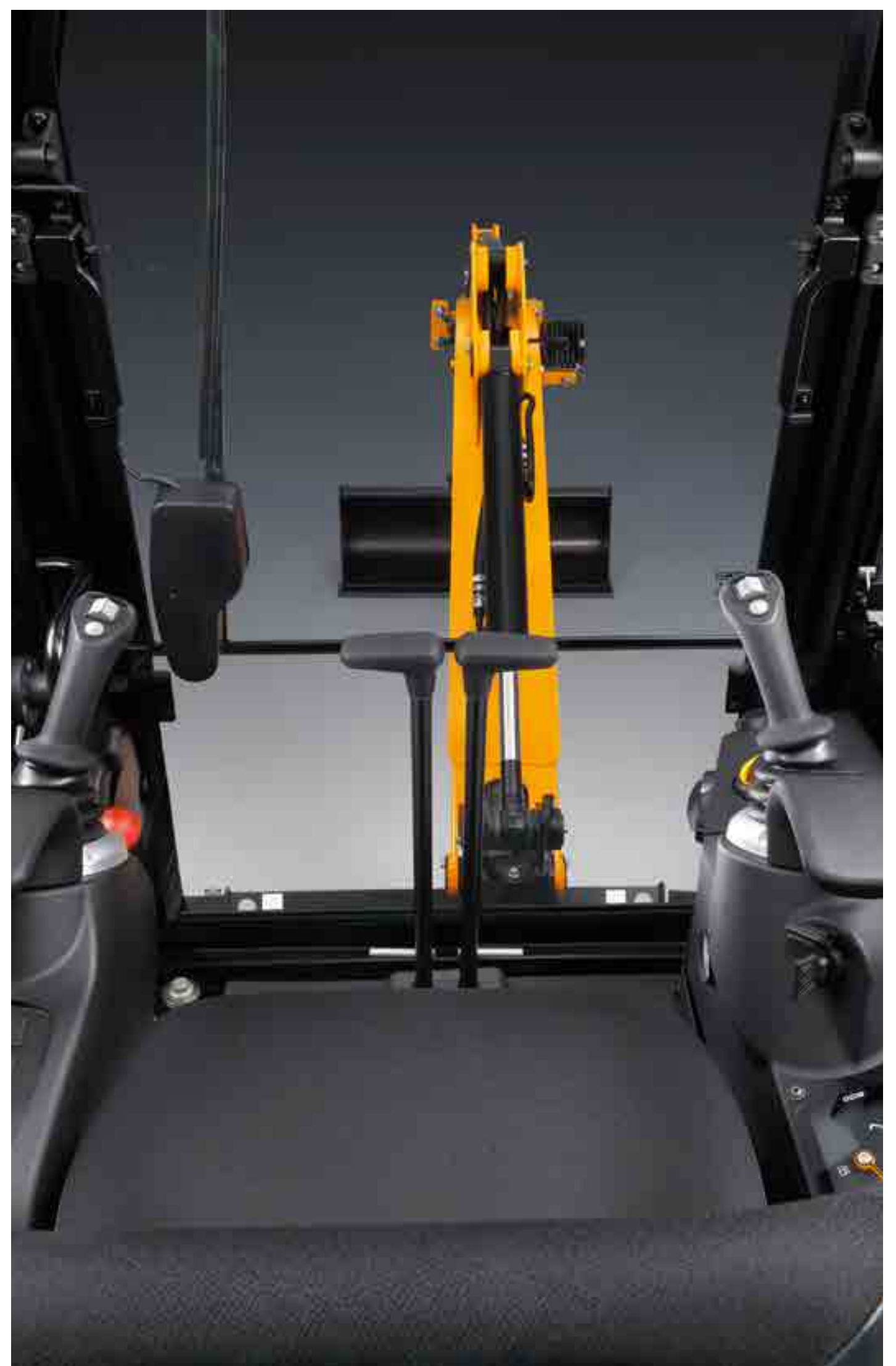
# CHOOSE SAFE & SECURE.

Thatcham approved immobiliser\*, with remote pin code management, eliminates unauthorised starts. Optional LiveLink provides added security.



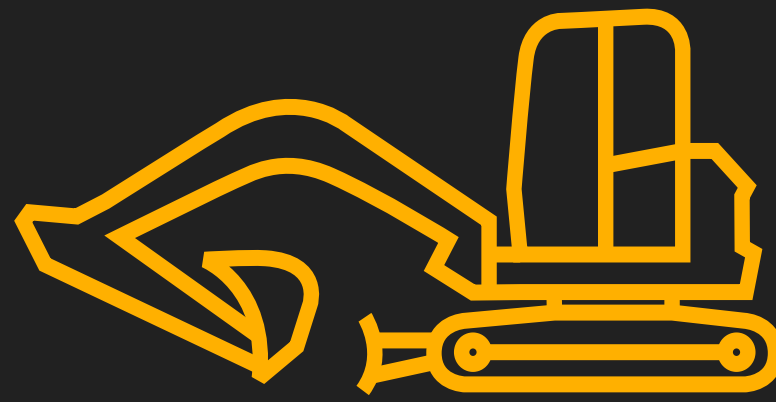
## CHOOSE PEACE OF MIND

For additional safety, our unique 2GO hydraulic isolation system, prevents accidental machine movements.



\*Region specific

# MINI EXCAVATOR | 16C-1 / 18Z-1 / 19C-1 / 19C-1 PC



## SPECIFICATION.

MODEL	16C-1	18Z-1	19C-1	19C-1 PC
Bucket tearout	15.6kN	18kN		
Service intervals	500 hours			
Transport length	3860mm	3547mm	3860mm	3862mm
Height over cab (canopy)	2342mm	2340mm	2345mm	2345mm
Width over tracks (retr.)	980mm			
Transport weight canopy/cab	1545/1655mm	1655mm	1736/1816mm	1769/1849mm



## STANDARD FEATURES.

- 500 hour greasing intervals
- 100% steel body panels
- Cast rear counterweight
- 100% flat cab glass
- Unique 2GO system
- Fully bushed kingpost
- 30mm bucket pins
- Electro-proportional controls
- ROPS/FOPS compliant cab
- Optional LiveLink



**JCB**

# **KEY FACTS**

## **I6C MINI EXCAVATOR**

**Choose JCB's Next Generation  
Stage V Mini Excavators**

**I-2T MINI EXCAVATORS**

**FIND OUT MORE**

**JCB**

[www.jcb.com](http://www.jcb.com)

